



# BACK TO SCHOOL

Help us provide new backpacks and school supplies to youth orphaned by mental, emotional, and behavioral challenges. It ensures they are prepared for the school year and have things to call their own. This year we will need:

- Backpacks
- Pens
- Folders
- Glue Sticks
- 24<sup>CT</sup> Crayons
- Colored Pencils
- Markers
- Highlighters
- Pencil Cases
- Calculators
- Rulers
- Notebooks

*No metal on notebooks, folders or rulers, and no erasers.*



## HURRY!

Collection time is limited! Please drop off supplies before August 11th!

## Donate!

Donate online at: [www.project-believe.net](http://www.project-believe.net) or [www.facebook.com/projectbelieve](https://www.facebook.com/projectbelieve)

Checks should be made payable to Project Believe and mailed to PO Box 191, Tipp City, OH 45371



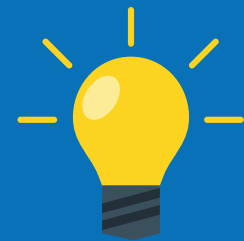
## SPREAD THE WORD!

Share our Facebook posts for info.



Tammie Rafferty, Director  
[info@project-believe.net](mailto:info@project-believe.net)  
[www.project-believe.net](http://www.project-believe.net)  
937.266.3074

[www.facebook.com/projectbelieve](https://www.facebook.com/projectbelieve)



## DROP OFF LOCATION

**Tipp City Public Library**  
11 E Main Street, Tipp

**We BELIEVE...**

### OUR MISSION

To provide comfort and support to youth orphaned by mental, emotional, and behavioral challenges.

### OUR VISION

A place to call home for youth orphaned by mental, emotional, and behavioral challenges.

### OUR CORE VALUES

No child should feel alone and forgotten, every child deserves the comforts of home, promises are made to be kept, magic happens when communities come together and care